

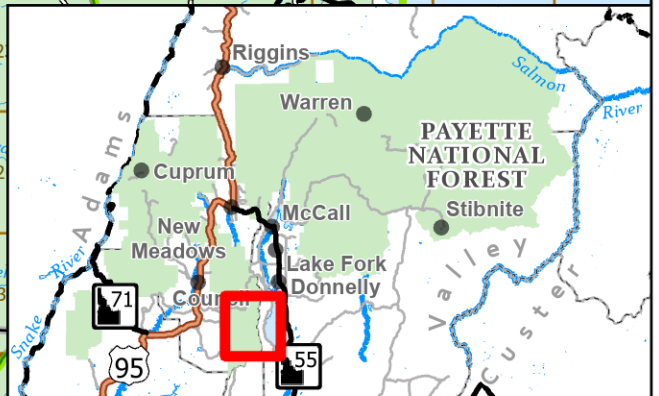
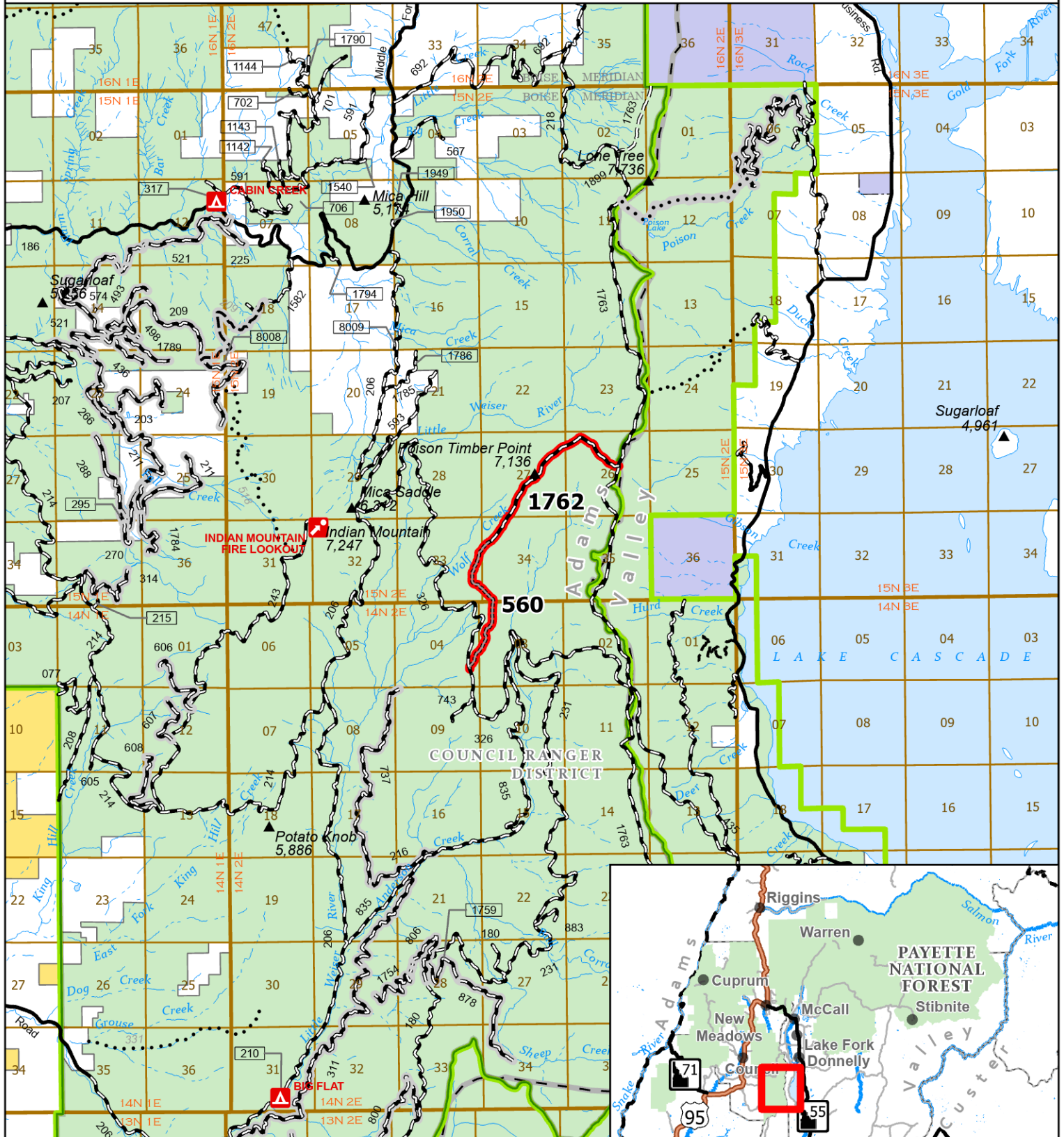


Forest Service  
U.S. DEPARTMENT OF AGRICULTURE

# Payette National Forest

## Wolf Creek Burned Area Road and Trail Closure

### Exhibit A - Road Closure Order 0412-606



▲ Summit	--- 7-Vehicles less than 50"	MVUM Road	■ BLM
— Described Road/Trail Closure	--- 8-Vehicles less than 50", Seasonal	— 1 Roads Open to All Vehicles, Yearlong	■ State
— County Road	... 9-Motorcycles	--- 2 Roads Open to All Vehicles, Seasonal	■ FS Ranger District
MVUM Trail	... 10-Motorcycles, Seasonal	Land Ownership	■ FS Administrative Forest
== 5-All Vehicles	----- 11-Vehicles less than 70"	■ Forest Service	■ County

N  
W — E  
S

0 0.5 1 2  
Miles

NAD 1983 UTM Zone 11N